

Manual - How to use the myMUB mobile app

The myMUB mobile application is a tool meant to facilitate the functioning of English-speaking students, PhD students and scientists at the Medical University of Białystok (MUB). Due to the fact that the mobile app includes tips and information about Białystok and the Podlaskie region, the app could be also useful for Polish students of the MUB as well as students from other universities located in the city.

The application contains **15** modules:

1. **University** - containing information about the university, clinical hospitals, research at the MUB, the Branicki Palace, as well as the tab regarding the admission process for English-language studies.
2. **Campus*** - a module created on the basis of web mapping, with marked university buildings, faculties, hospitals, dorms and service places (restaurants, clubs, copy centres, hotels, parking lots) located in the surroundings of the MUB campus. Each place has a showcase containing basic data such as opening hours, address, phone number, e-mail address. Some of them have photo miniatures. The module also includes an option to navigate to the target place. Thanks to the search engine and points filtering, it is easy to find selected place.
3. **Calendar** - a day plan management tool integrated with the smartphone calendar.
4. **News** - an information module that publishes the latest information from the life of the Medical University of Białystok and important announcements. The news mainly come from the official website of the MUB.
5. **Events** - a module informing about upcoming events organised by the University.
6. **Guide** - a comprehensive guide for new students or foreign guests, including contact details of Dean's Offices and MUB units that support foreign students, information on dormitories, student organisations, transport (bus timetable and taxi services), legalisation of stay, security, healthcare in Poland (including lists of hospitals, healthcare centres and pharmacies), transport, as well as a Polish-English glossary with the most commonly used words and phrases and pronunciation recorded by the Polish native speaker.
7. **Student zone** - the module allows you to log in to your personal profile, check your individual schedule and receive important notifications directed to the exact person, study year or exercise group. **Important information: An access to the "Student Zone" module can be accessed only by English Division Students.**
8. **Education** - a kind of compendium of knowledge about English-language studies. Here, students have the opportunity to check syllabuses, class schedules, study regulations, and easily contact the English Division Dean's Office.
9. **Welcome Centre** - containing a list of matters that can be dealt with at the Welcome Centre, as well as the possibility of contact with employees providing services for foreign students.
10. **Emergency Numbers** - a module for making emergency calls (112 - emergency number,

997 - police, 998 - fire brigade, 999 - ambulance).

11. **International Cooperation** - a module which describes, among others, MUB's international cooperation with other centres from abroad, contact persons as well as a procedure for applying for trips abroad in a nutshell.

12. **Białystok** – a module containing a brief description of the city and interesting places/monuments to visit, list of offices (including public offices, post offices and police stations), sport and culture facilities, as well as information about Podlaskie voivodeship. An important part of the module is the map presenting above mentioned places and points, integrated with web mapping service, with the same functionalities to map indicated in the module Campus.

13. **Exchange Rate** - a solution that allows to easily convert the exchange rate of 10 foreign currencies (USD, GBP, EUR, NOK, SEK, CHF, CNY, CAD, AUD, INR), including cross rates. The exchange rates are automatically updated, on the daily basis, from the Polish Central Bank.

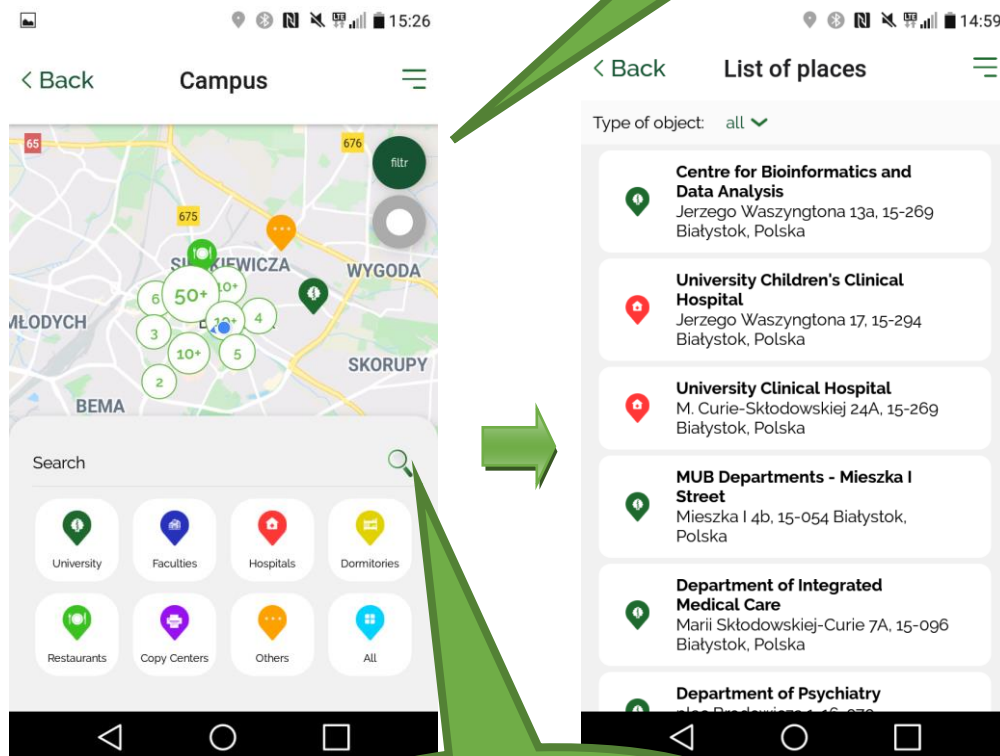
14. **Contact finder** – a tool that allows you to find a contact details of MUB employees.

15. **About the app** - a summary module including a description of the mobile app, and information about funding source.

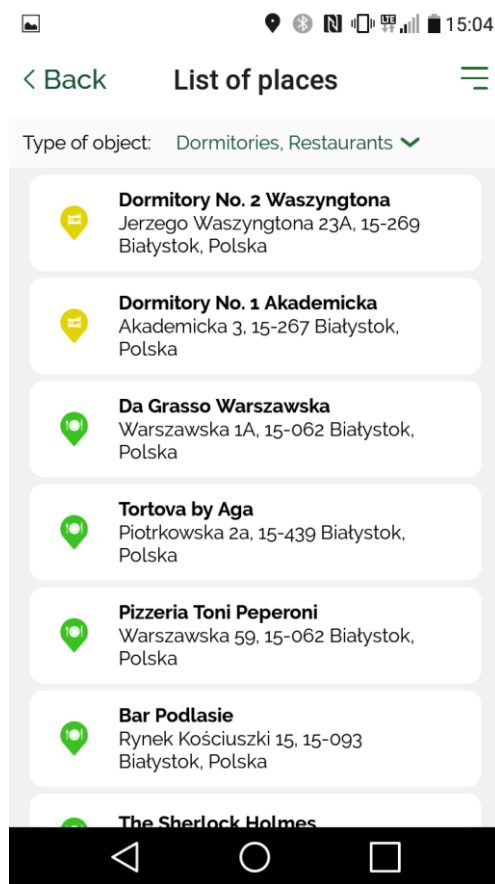
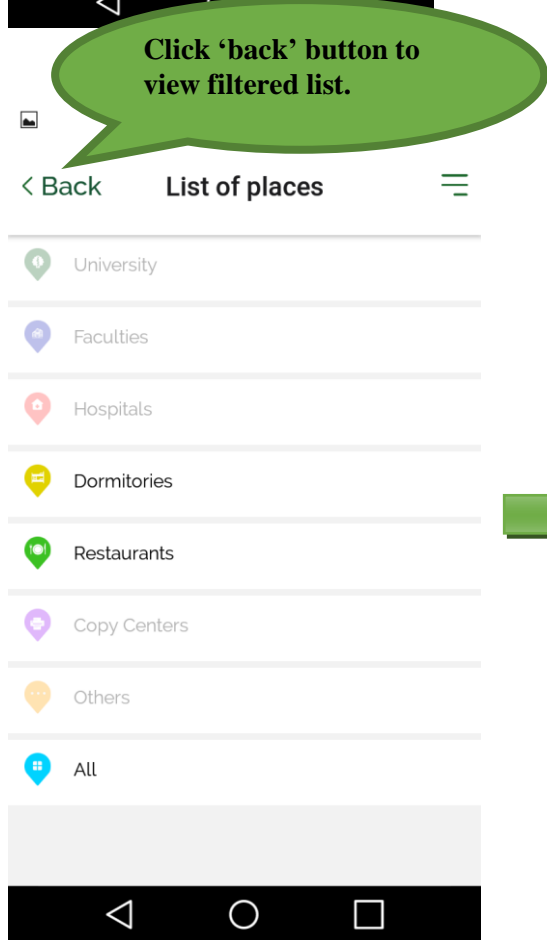
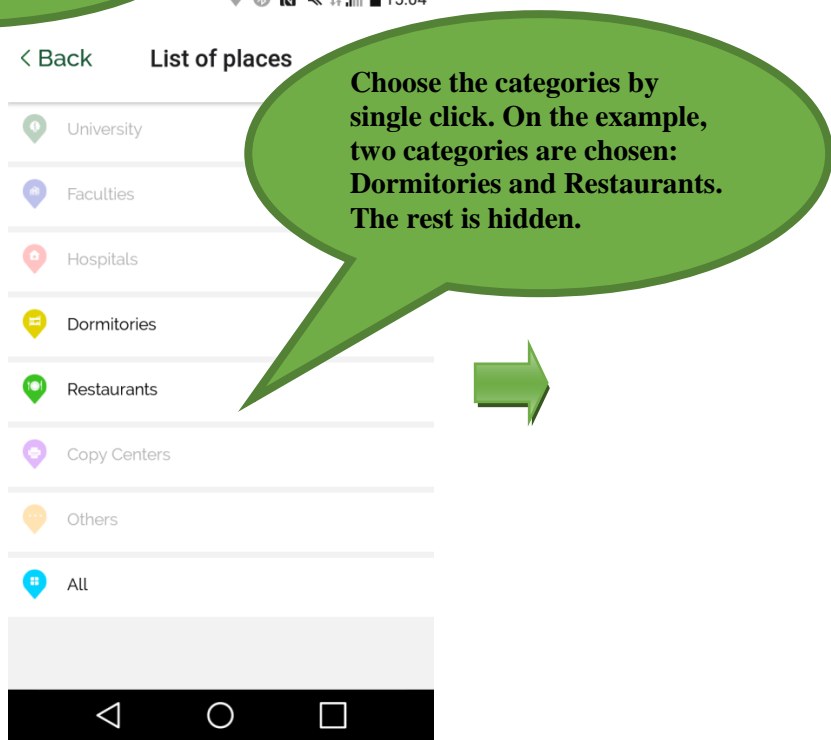
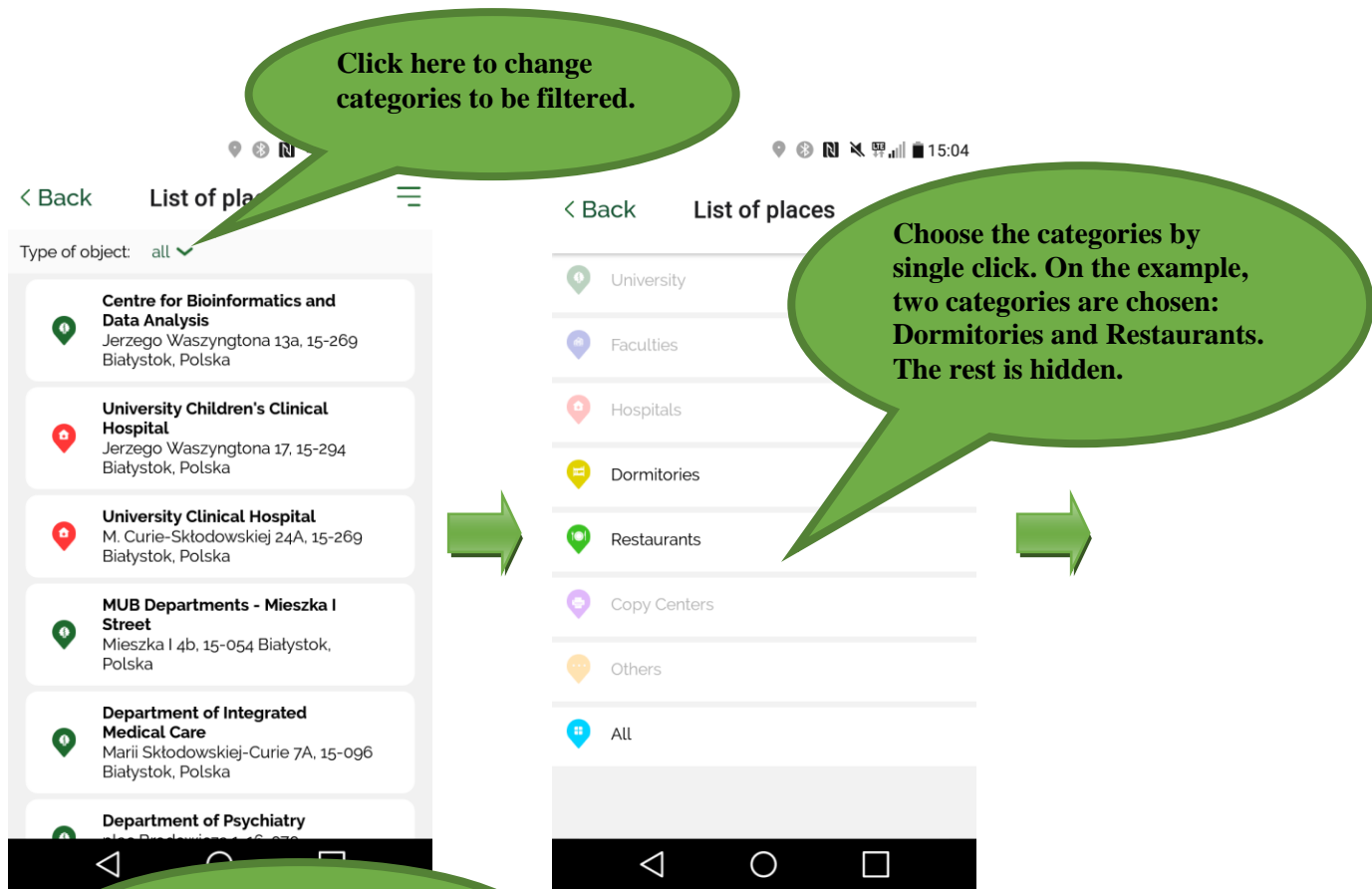
The most important functionalities:

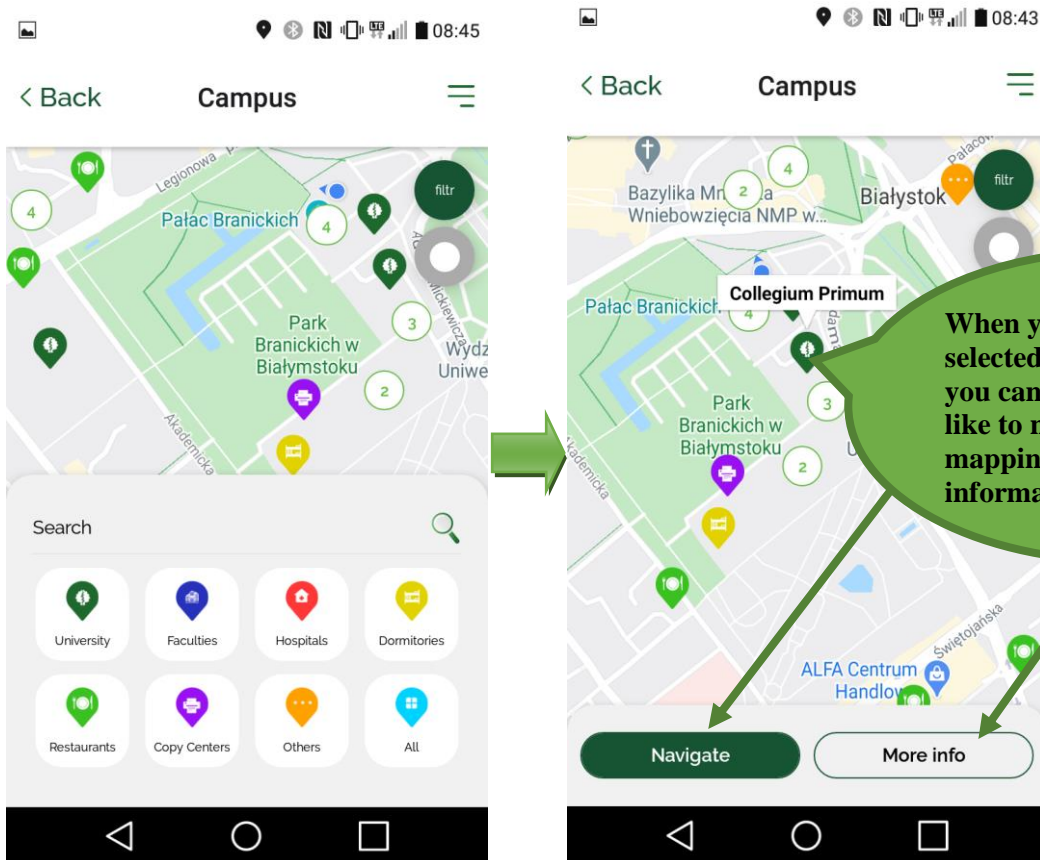
- **Module Campus**

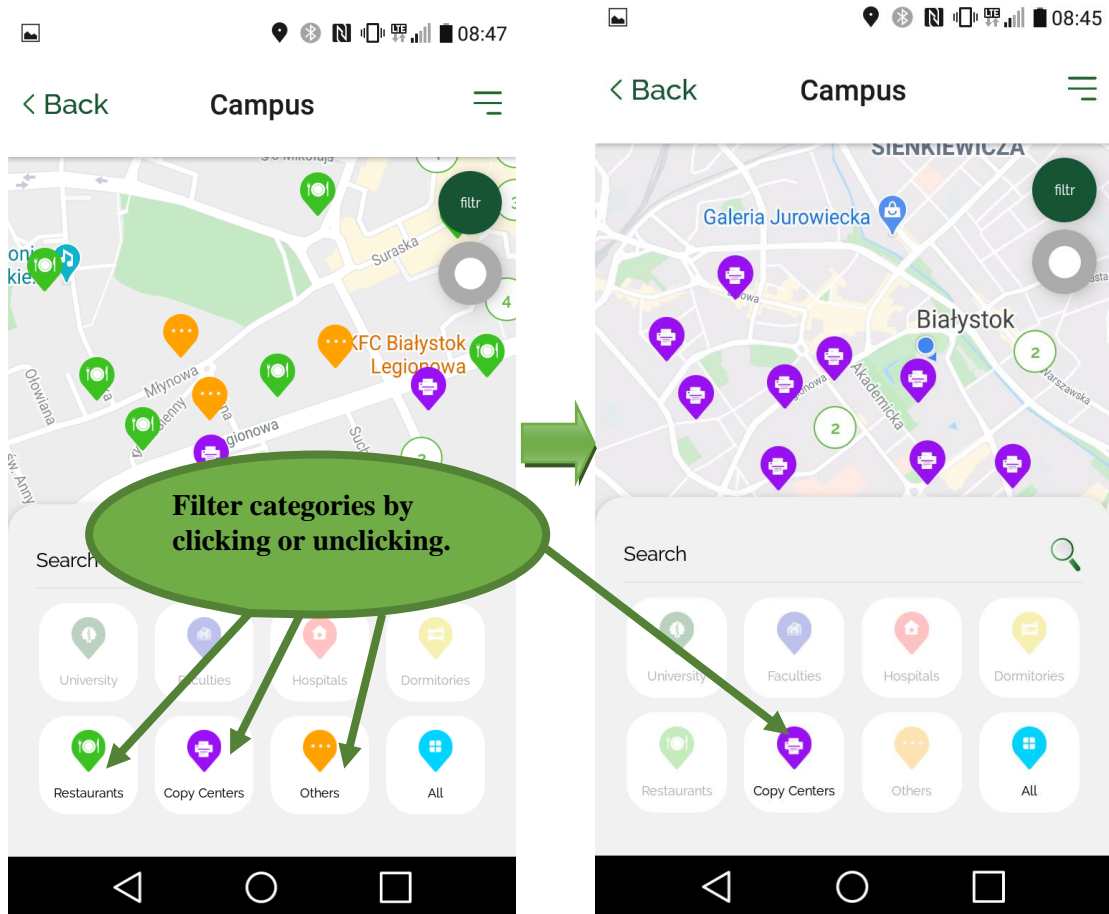
Click here to open the list of places. You can filter them by any means.



Find place using a search engine.



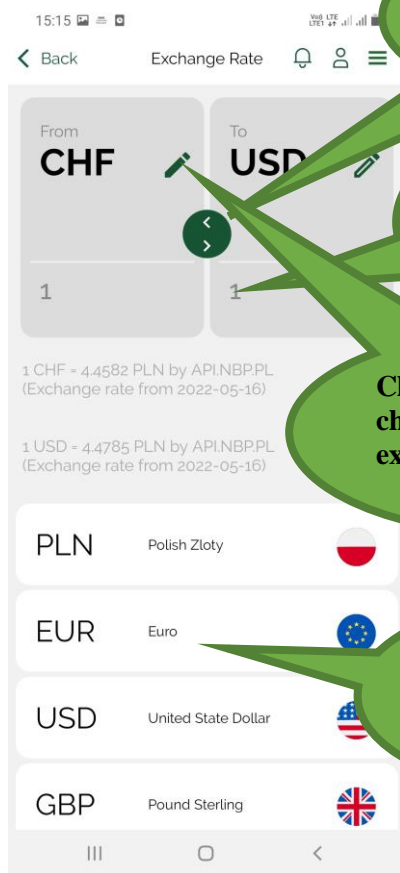




- **Module Emergency numbers**



- **Module Exchange Rate**



Click here to change exchange sequence.

Exchange rates are being calculated automatically.

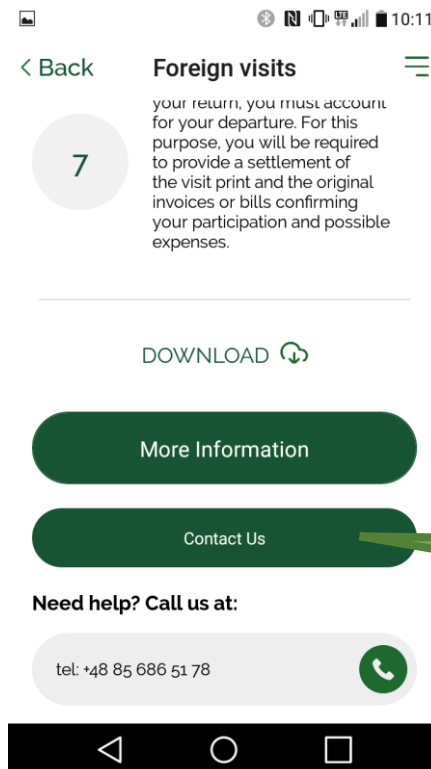
Click at the "Pencil" to change the way of exchange (From or To).

Afterwards, click at the button to change currency.

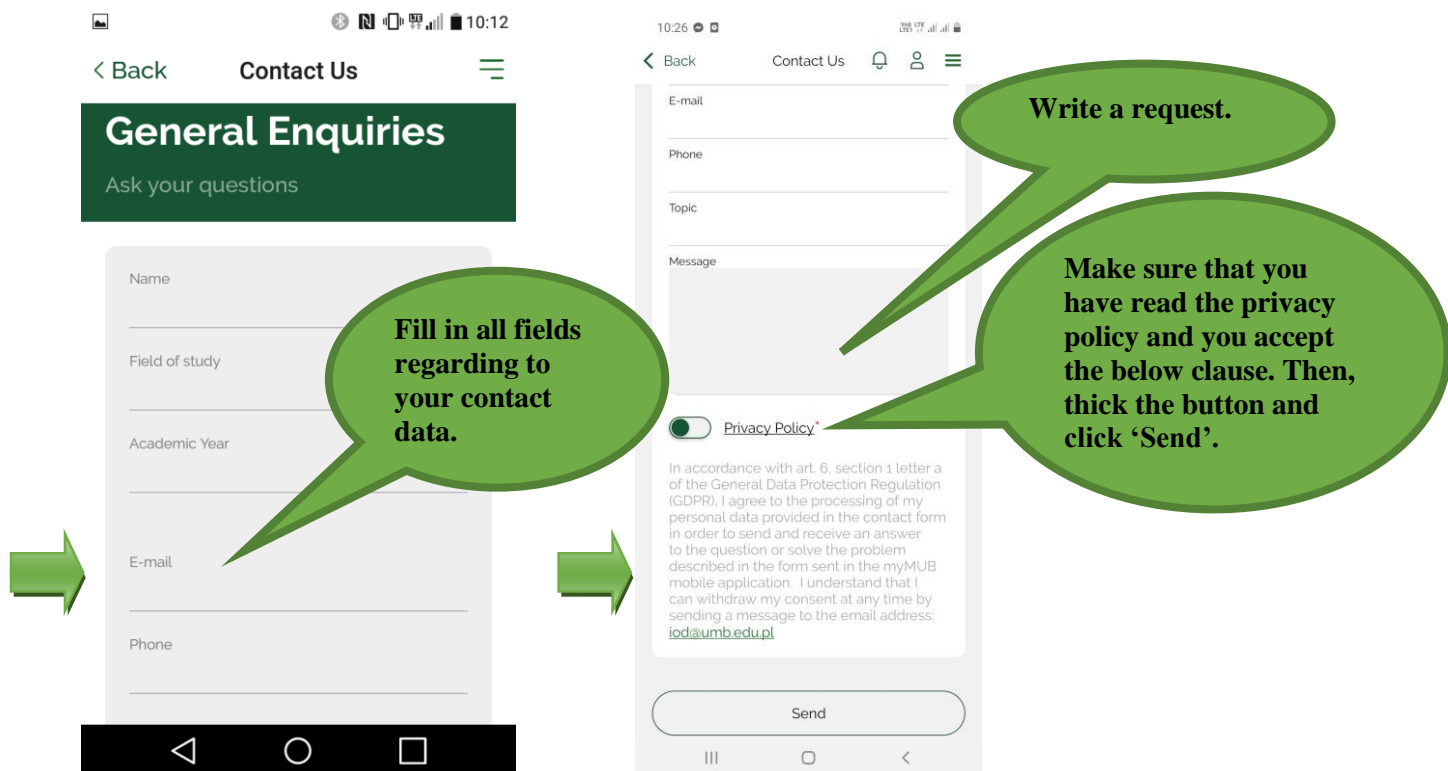
After expansion - new currencies to exchange: CHF, CNY, CAD, AUD, INR.



- **Contact form**



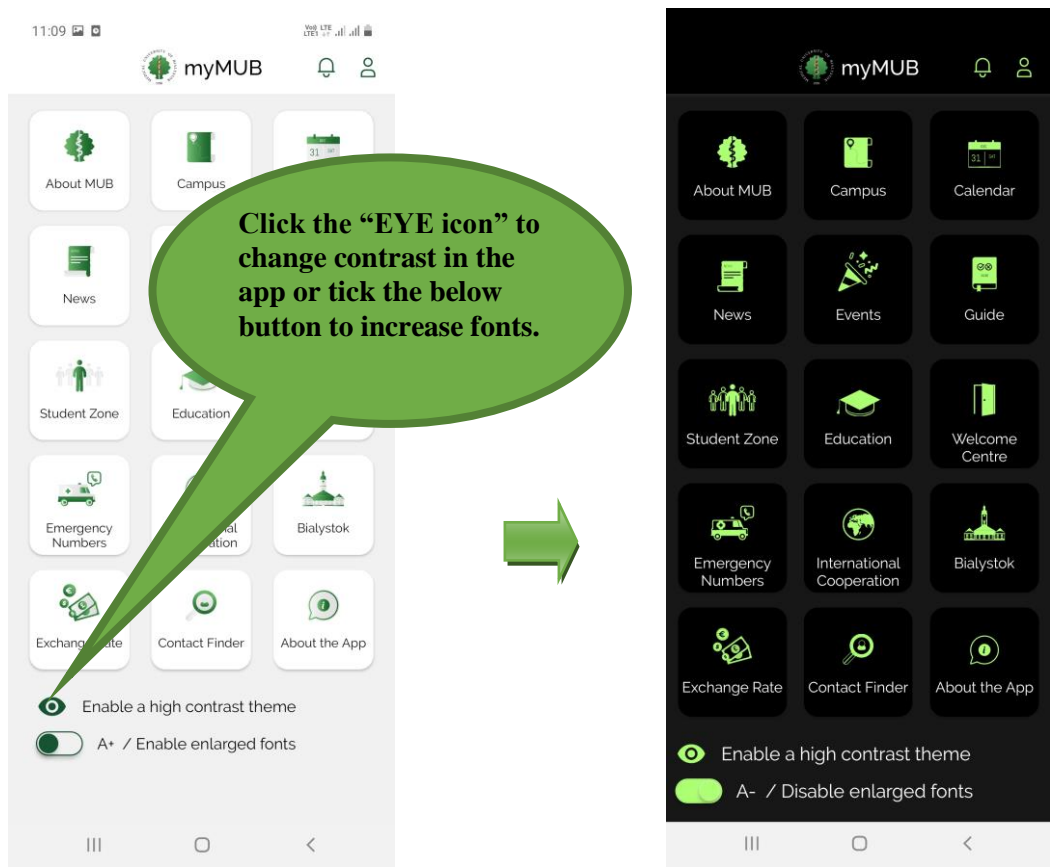
Choose a 'Contact Us' button to send a request to the responsible department of the MUB. The functionality is devoted for foreign students of the MUB.



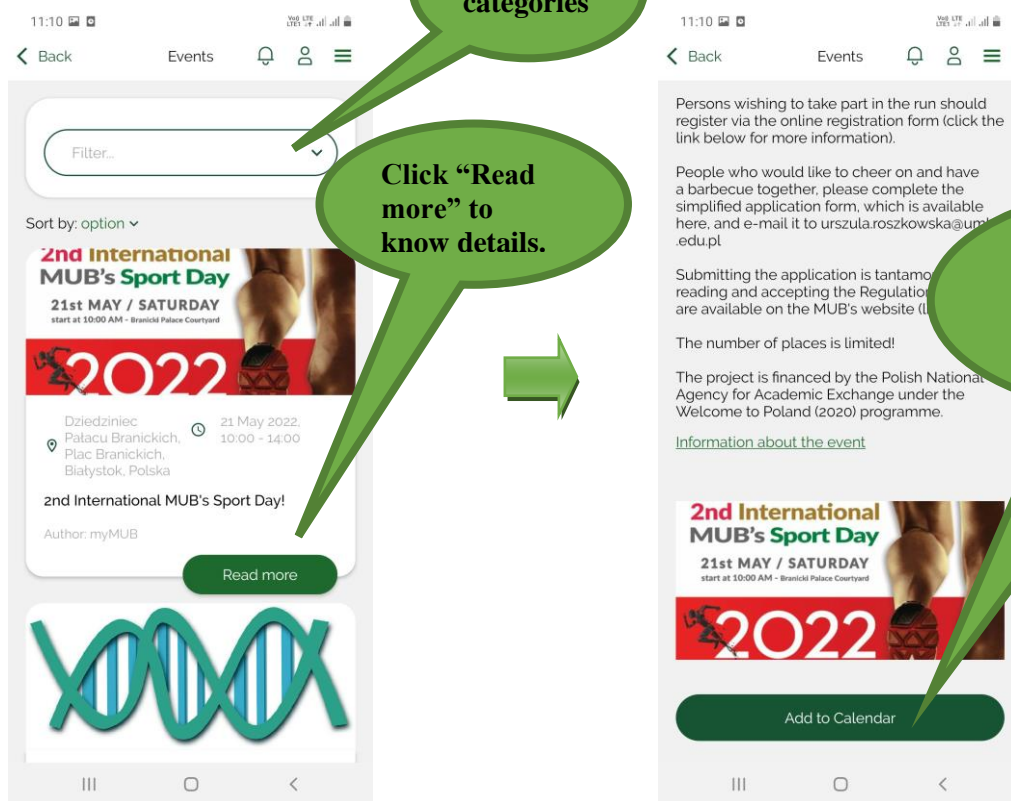
- **Module – Contact Finder**



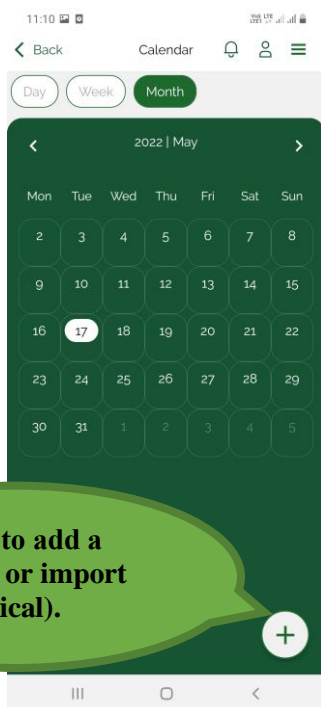
Click the button. You will be redirected to the contact finder (employees of the MUB) available on the official University website.



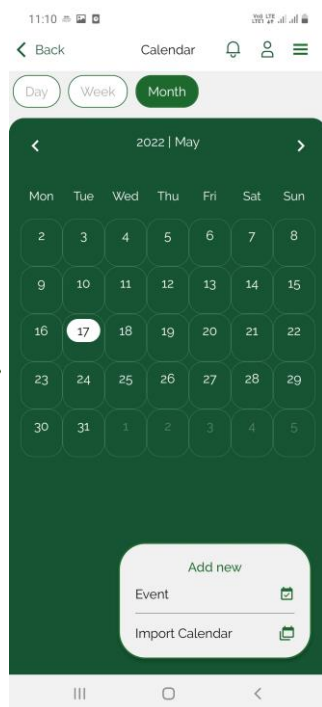
• **Module Events**



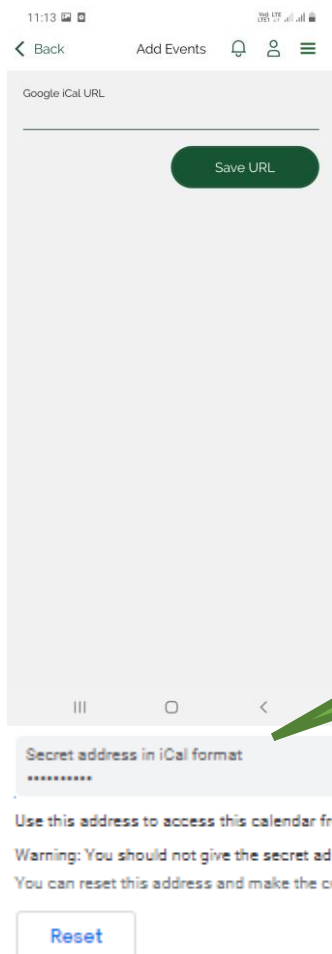
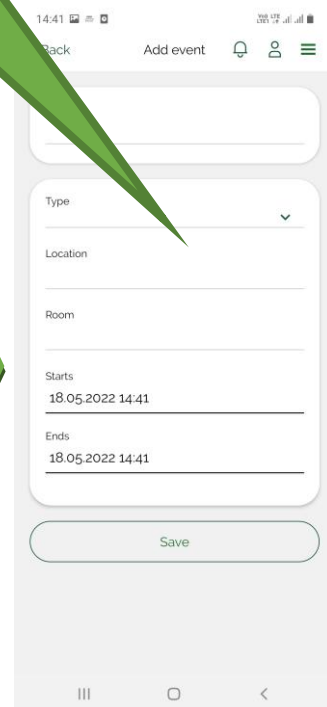
• Module Calendar



Click “+” to add a new event or import calendar (ical).



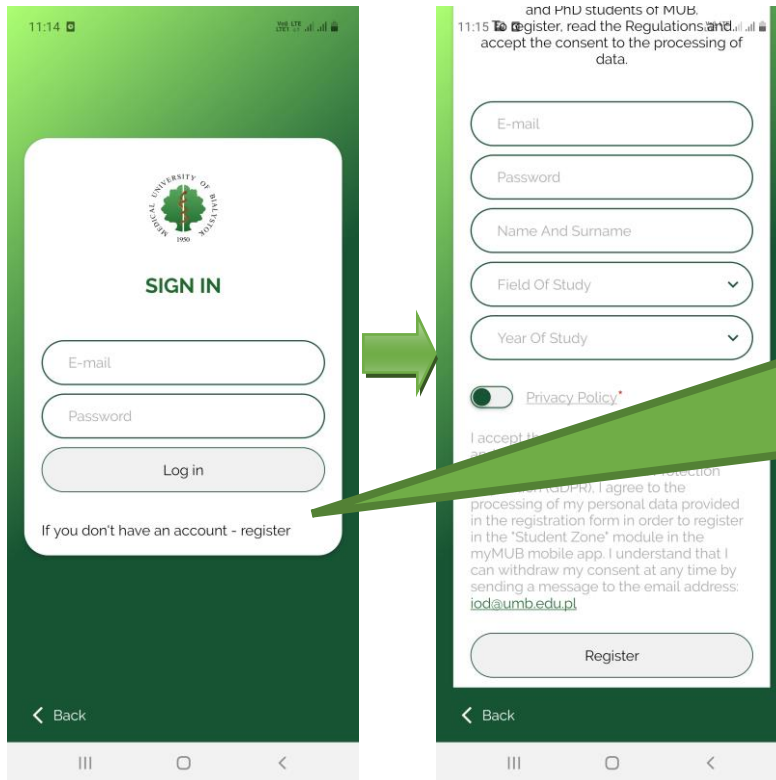
To add an event, fulfill necessary data and click “Save”.



To import a calendar, copy a link from your Google Calendar (only google calendar is possible) and click “SAVE URL”. If the link is correct, the events will be added to your app calendar.

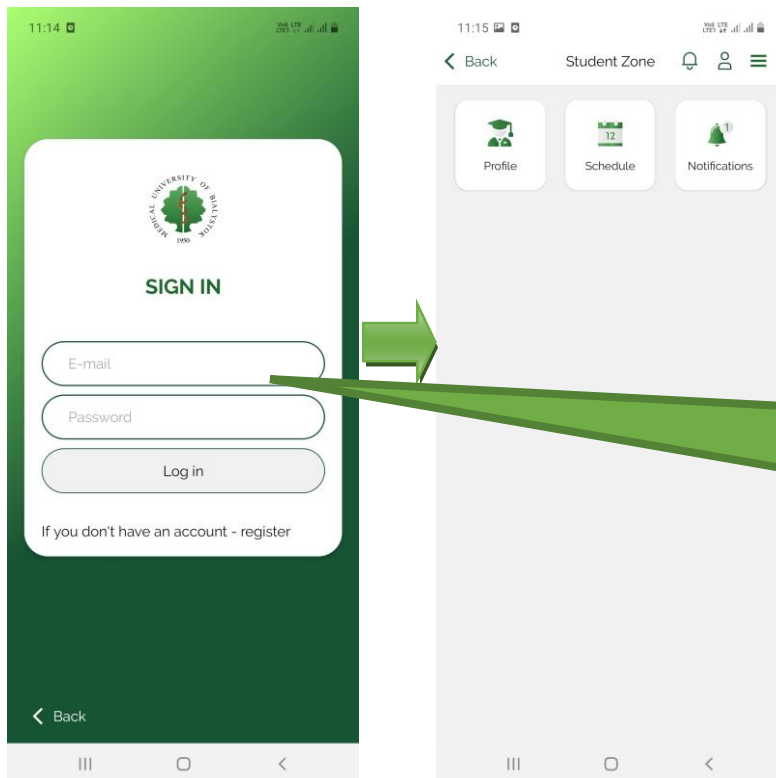
It is worth to note that a link should be copied from the text field called “Secret address in iCal format”. It is available in the settings of the Google (Gmail) Calendar.

- **Module Student Zone (access only for English Division students)**



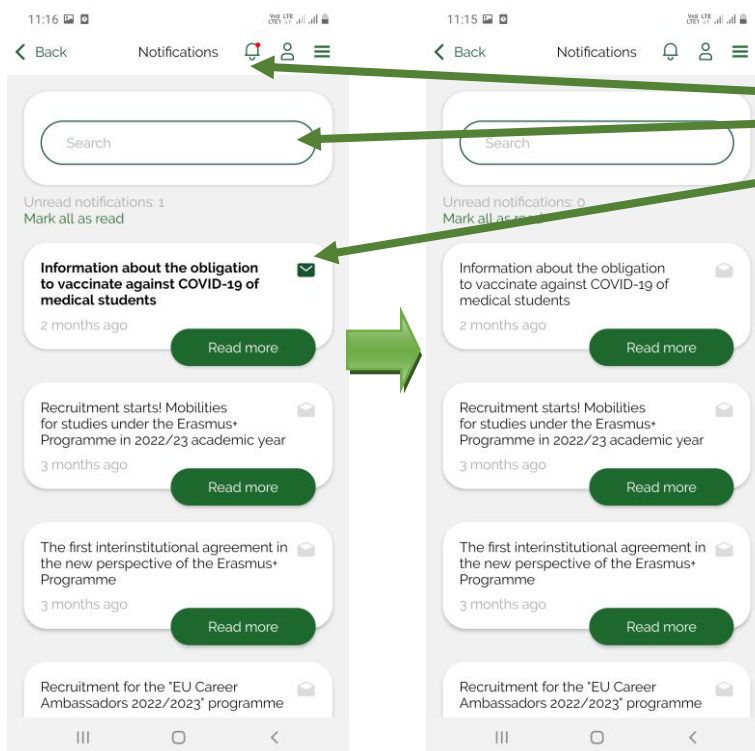
You have to create your own account to get access to the Student Zone module. Please Click “Register” and fulfill the personal data (e-mail, password, name and surname, field and year of study. Accept the Privacy Policy and click the button “Register”.

Your account will be verified by the University. After positive validation of the account (confirmation of the English Division student status), you will gain access to the Student Zone module.



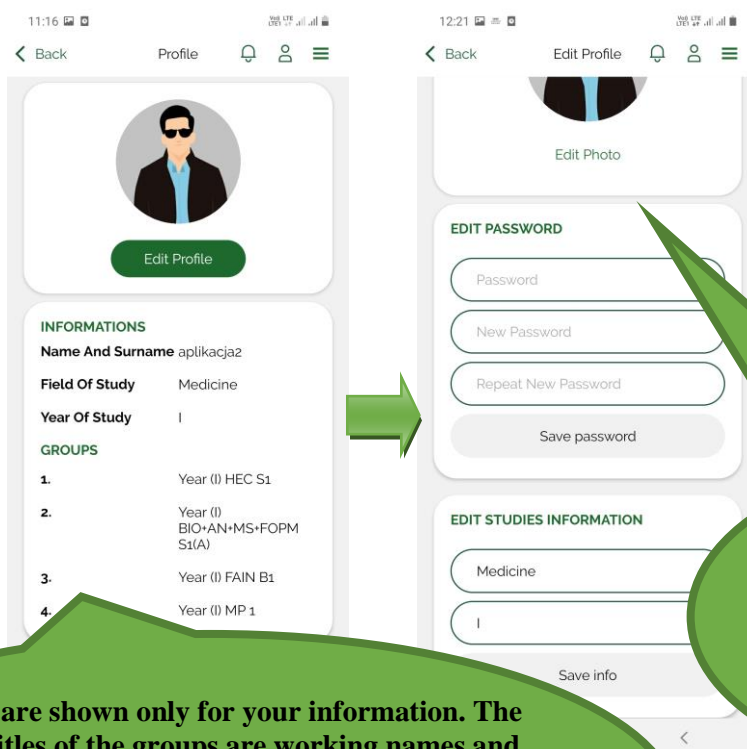
To sign in, you have to provide e-mail address and password. After that, you have access to the module.

- notifications (Student Zone module)



- a bell with red dot informs about a new notification,
 - use a search engine to find a notification that you are looking for,
 - tick a notification as read or unread
Please note – notifications are visible only for logged in users.

- profile (Student Zone module)

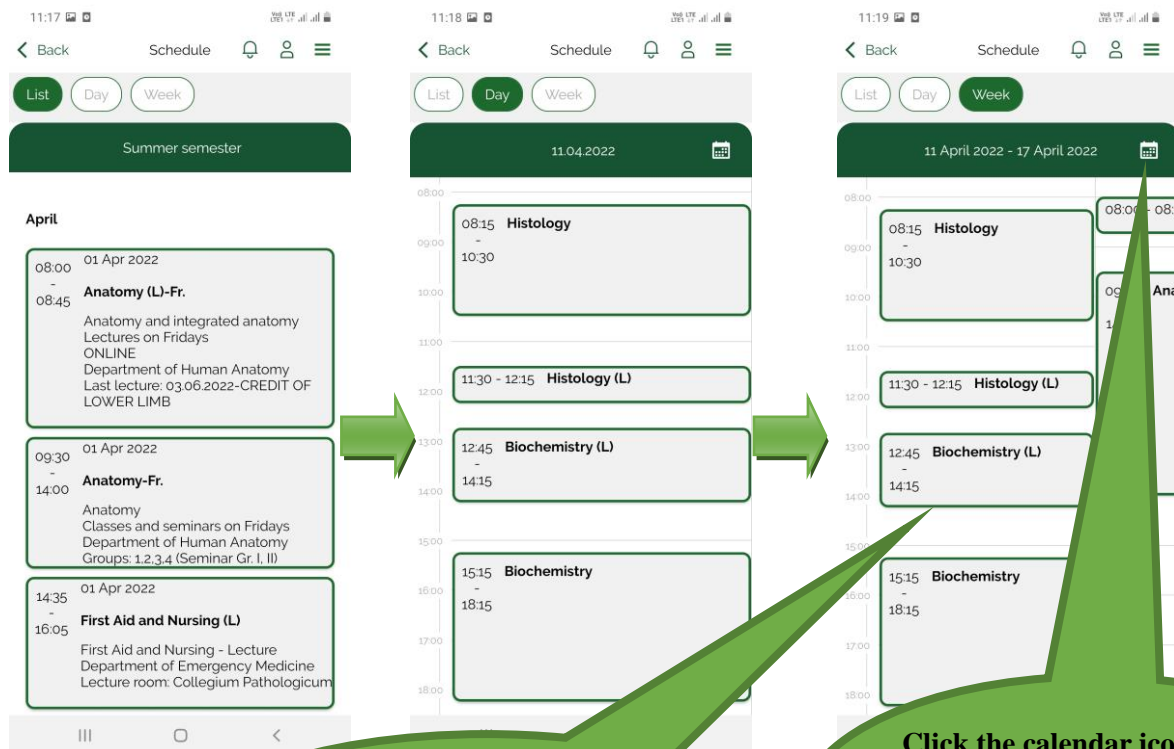


Groups are shown only for your information. The visible titles of the groups are working names and they do not mean anything.
English Division students are assigned to the exact groups by the myMUB administrator.

Click “Profile” in the menu of the module and edit data such as profile photo (visible only for the user), password or year of study (after passing a year). Then click – “Save info”.

- schedule (Student Zone module)

The functionality allows you to check your individual schedule. You can choose three view options (list – showing all lectures & exercises in a semester, Day or Week).



To check earlier/later hours or following days (only in a week view), slide your finger up/down or left/right.

Click the calendar icon to choose a day or week. To choose a week, you can select a random day from the week that you are looking for.

Important information: Individual schedules available in the “Student zone” module in the myMUB app have only supporting character. The schedules are assigned on the basis of the official schedules published in the English Division website ([LINK](#)) and lists of students divided into exercise groups received from the English Division Dean’s Office.

The schedules do not include changes agreed upon with the lecturers and other changes not included in the official schedules.

If you have any problems or your plan is different than this displayed in the mobile app, please send a request at: mymub@umb.edu.pl

The Medical University of Białystok is not responsible for correctness and completeness of the individual schedules published in the myMUB mobile application.

Additional information:

* It is worth adding that the opening hours of certain University buildings (relates only to category: University) are approximated. In some buildings there are several MUB departments located, i.e. Collegium Primum or the opening hours depend on the class schedules i.e. Department of Integrated Medical Care. The working hours sometimes relates to the administration i.e. Department of Oncology (07:30-15:30).

The photographs presenting Bialystok have been taken by the employees of the International Cooperation Department. The pictures showing the most attractive places in the Podlaskie voivodeship have been taken by participants of the “Rajskie Podlaskie” (literally: Podlaskie Paradise) Photography Contest. More information about the contest and the winners on the [MUB's website](#).

The content of the myMUB mobile app is for informational purposes only. The Medical University of Bialystok is not responsible for the timeliness, correctness, completion, completeness and quality of the content of the mobile app.

Responsible unit for creating the mobile app was the International Cooperation Department (ICD) of the Medical University of Bialystok. The employees of the ICD have prepared most of the content of the mobile app. Supervision over the creation of the application was directly exercised by the Rector's Plenipotentiary for International Cooperation - prof. dr hab. Tomasz Hryzko.

Update: 23.05.2022.